

# COMPANION TOOLS



## TSPLUS ADVANCED SECURITY

*THE PERFECT TOOL TO SECURE YOUR TSPLUS' REMOTE SERVERS!*

*TSplus Advanced Security* offers cutting-edge functionalities and makes the use of remote access in your daily routine as safe as possible.

Most organizations assume that the hackers who threaten them will be motivated by the value of the information the company uses to provide its services. The truth is that cyber criminals don't necessarily care about the value of corporate, personal and/or financial data. Many attacks are perpetrated on systems because there's value in the processing power of the systems themselves.



As Windows infrastructures grow and evolve, it gets more and more difficult for security experts to see all the endpoints in their architecture. **And you need to know your Remote Desktop vulnerabilities to mitigate your risk.**

TSplus **Advanced Security** consists of a robust and integrated set of security features to protect against these Remote Desktop attacks. This software approach combines advanced technology as well as the latest lessons and insights our elite team of Remote Desktop cyber security specialists brings back from real-world missions.



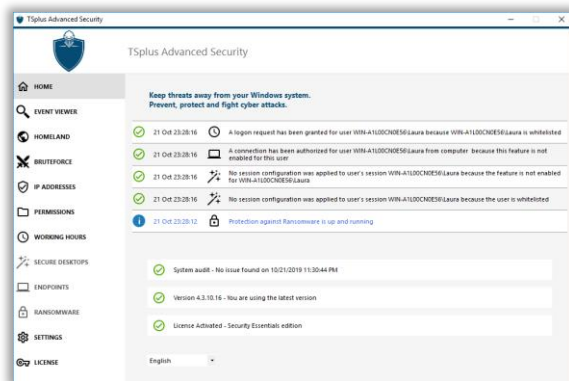
**TSplus Advanced Security is available in two editions:**

- **SECURITY ESSENTIALS:** the best package to keep your Remote Desktop connection safe, with powerful protection features. It is the low-cost security solution you can even apply to all W7/W10 Pro RDP accesses.
- **ULTIMATE PROTECTION:** the security tool every Windows Server administrator "Must Have": it provides everything you need to effectively protect your user environment and prohibit malicious actions.

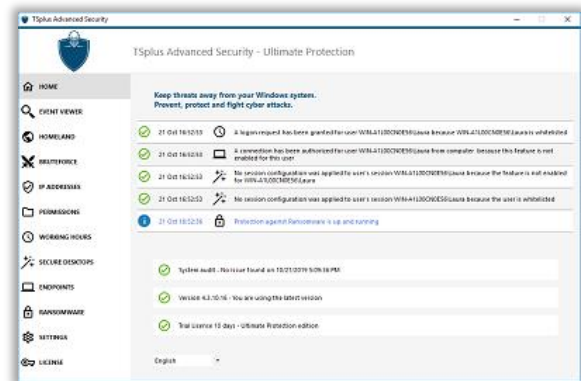
# COMPANION TOOLS

*THE 360 DEGREE APPROACH TO SECURITY  
INCLUDED IN TSPLUS AS A TRIAL VERSION*

## SECURITY ESSENTIALS EDITION



## ULTIMATE PROTECTION EDITION



### Included Features:

- ✓ **Homeland Protection:** Prevent attackers from opening a session.
- ✓ **Prevent brute-force attacks:** Blacklist the offending IP addresses.
- ✓ **Working Hours restriction:** Prohibit users to connect at night (for all users).
- ✓ **Permissions:** Quickly *inspect* access rights per users & groups of users.
- ✓ **IP Management:** All IPs information detected by *Homeland* and *Brute-Force* protections to manage from one place.
- ✓ **Events Log:** Displays the last 2500 events.

### Included Features:

- ✓ **All features from the SECURITY ESSENTIALS Edition.**
- ✓ **Ransomware protection:** Immediately detect ransomware attacks and stop data encryption.
- ✓ **One click to Secure Desktop:** Provide a highly secure user environment (per user or per group).
- ✓ **End-Point Device Protection:** Restrict access per device (per user).
- ✓ **Permissions:** Quickly *inspect and Edit* access rights per users & groups.

*IT JUST WORKS OUT OF THE BOX AND DISPLAYS THE MOST USEFUL DATA EXTRACTED FROM YOUR SERVER. WITH **TSPLUS ADVANCED SECURITY** YOU CAN LOG IN TO YOUR SERVER FROM ANYWHERE, AT ANY TIME, WITHOUT FEAR OF EXTERNAL ATTACKS.*